

**SLC25A19 Antibody (C-term)**  
**Affinity Purified Rabbit Polyclonal Antibody (Pab)**  
**Catalog # AP5269b**

**Specification**

---

**SLC25A19 Antibody (C-term) - Product Information**

Application	WB,E
Primary Accession	<a href="#">O9HC21</a>
Other Accession	<a href="#">Q5IS35</a>
Reactivity	Human, Mouse
Predicted	Monkey
Host	Rabbit
Clonality	Polyclonal
Isotype	Rabbit IgG
Calculated MW	35511
Antigen Region	236-263

**SLC25A19 Antibody (C-term) - Additional Information**

**Gene ID** 60386

**Other Names**

Mitochondrial thiamine pyrophosphate carrier, Mitochondrial uncoupling protein 1, Solute carrier family 25 member 19, SLC25A19, DNC, MUP1

**Target/Specificity**

This SLC25A19 antibody is generated from rabbits immunized with a KLH conjugated synthetic peptide between 236-263 amino acids from the C-terminal region of human SLC25A19.

**Dilution**

WB~~1:1000

E~~Use at an assay dependent concentration.

**Format**

Purified polyclonal antibody supplied in PBS with 0.09% (W/V) sodium azide. This antibody is purified through a protein A column, followed by peptide affinity purification.

**Storage**

Maintain refrigerated at 2-8°C for up to 2 weeks. For long term storage store at -20°C in small aliquots to prevent freeze-thaw cycles.

**Precautions**

SLC25A19 Antibody (C-term) is for research use only and not for use in diagnostic or therapeutic procedures.

**SLC25A19 Antibody (C-term) - Protein Information**

**Name** SLC25A19 ([HGNC:14409](#))

**Function** Mitochondrial transporter mediating uptake of thiamine diphosphate into mitochondria. It is not clear if the antiporter activity is affected by the membrane potential or by the proton electrochemical gradient.

**Cellular Location**

Mitochondrion membrane; Multi-pass membrane protein

**Tissue Location**

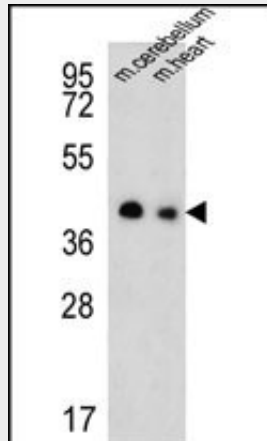
Expressed in all tissues examined except for placenta. Highest levels in colon, kidney, lung, testis, spleen, and brain.

**SLC25A19 Antibody (C-term) - Protocols**

Provided below are standard protocols that you may find useful for product applications.

- [Western Blot](#)
- [Blocking Peptides](#)
- [Dot Blot](#)
- [Immunohistochemistry](#)
- [Immunofluorescence](#)
- [Immunoprecipitation](#)
- [Flow Cytometry](#)
- [Cell Culture](#)

**SLC25A19 Antibody (C-term) - Images**



Western blot analysis of SLC25A19 Antibody (C-term) (Cat. #AP5269b) in mouse cerebellum, heart tissue lysates (35ug/lane). SLC25A19 (arrow) was detected using the purified Pab.

**SLC25A19 Antibody (C-term) - Background**

SLC25A19 encodes a mitochondrial protein that is a member of the solute carrier family. Although this protein was initially thought to be the mitochondrial deoxynucleotide carrier involved in the uptake of deoxynucleotides into the matrix of the mitochondria, further studies have demonstrated that this protein instead functions as the mitochondrial thiamine pyrophosphate carrier, which transports thiamine pyrophosphates into mitochondria.

**SLC25A19 Antibody (C-term) - References**

Spiegel, R., et al. Ann. Neurol. 66(3):419-424(2009)

Kang, J., et al. Mitochondrion 8(2):103-108(2008)

Lindhurst, M.J., et al. Proc. Natl. Acad. Sci. U.S.A. 103(43):15927-15932(2006)

**SLC25A19 Antibody (C-term) - Citations**

- [Developmental maturation of the colonic uptake process of the microbiota-generated thiamin pyrophosphate](#)
- [Adaptive-regulation of pancreatic acinar mitochondrial thiamin pyrophosphate uptake process: Possible involvement of epigenetic mechanism\(s\).](#)